

PRODUCT INTRODUCTION (HD44A25/HD46A25)

The Master handheld thermal imaging camera is a powerful tool that can accurately measure the temperature of high temperature targets in the environment, helping field personnel to quickly identify faults and assist in decision making to ensure safety, making it ideal for use in power, construction, electrical, mechanical and other areas where temperature measurement is required. It is the ideal tool for electric power, construction, electrical, mechanical and other fields with temperature measurement needs. Through different magnification with built-in ledger and intelligent diagnostic system, it can realise the inspection tasks and condition data analysis for electric power and manufacturing enterprises, which is a master's choice and a professional choice.



HD44A25/HD46A25 产品图

PRODUCT FEATURES



■ Multifocus mode

Automatic, continuous automatic, laser assisted, touch focus, manual and other multi-focusing methods



■ Multi-method temperature measurement

supports hot spot, cold point, center point, 10point, 5boxes, 5circles, and 1 line temperature measurement



■ Portable Charging

Standby time 4H, field replaceable, rechargeable



■ Multiple magnification

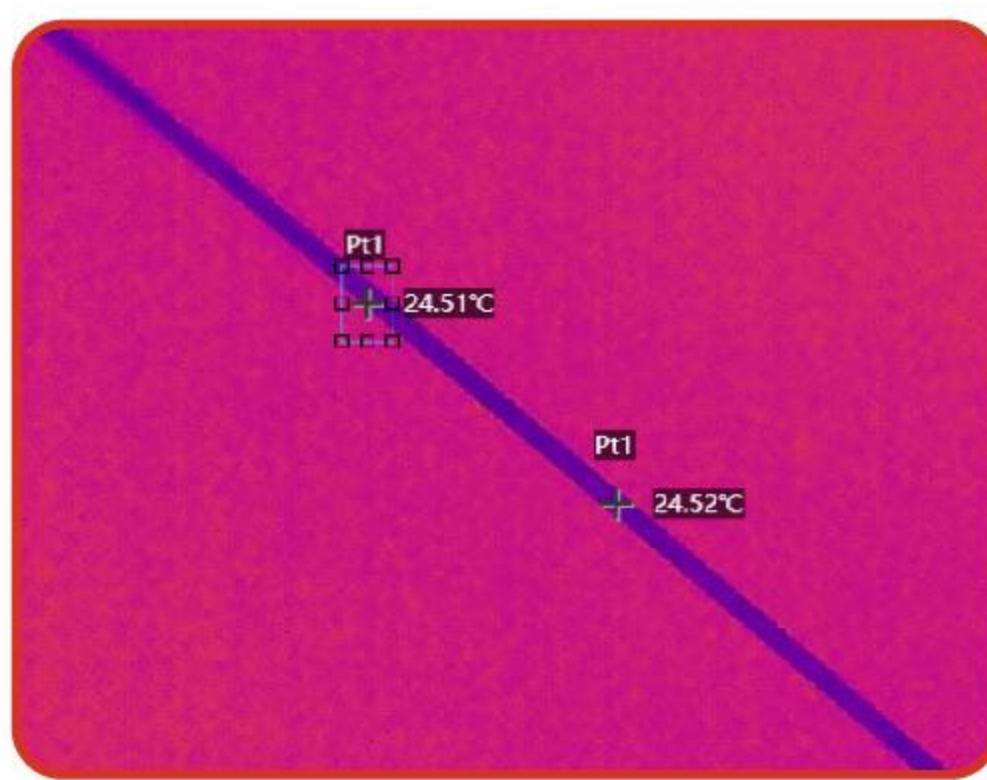
Supports expansion of 0.5X, 2X, 3X mirrors



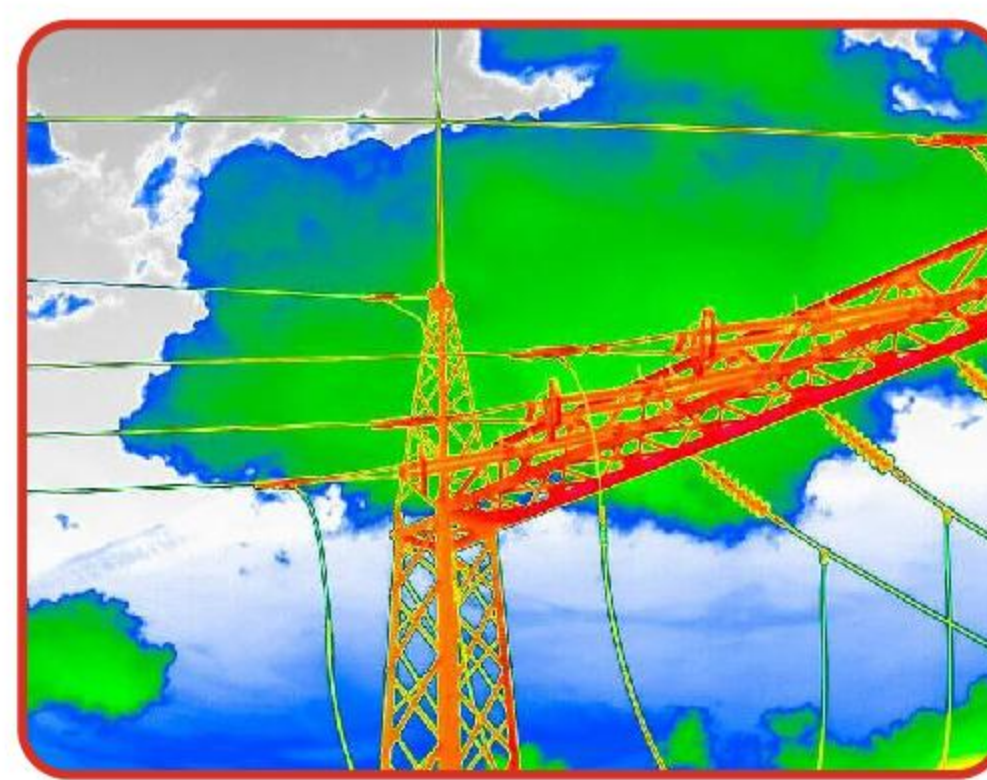
■ Off-line temperature measurement analysis

Image storage of full-screen temperature measurement information, support for offline temperature analysis (for use with clients)

APPLICATION SCENARIOS



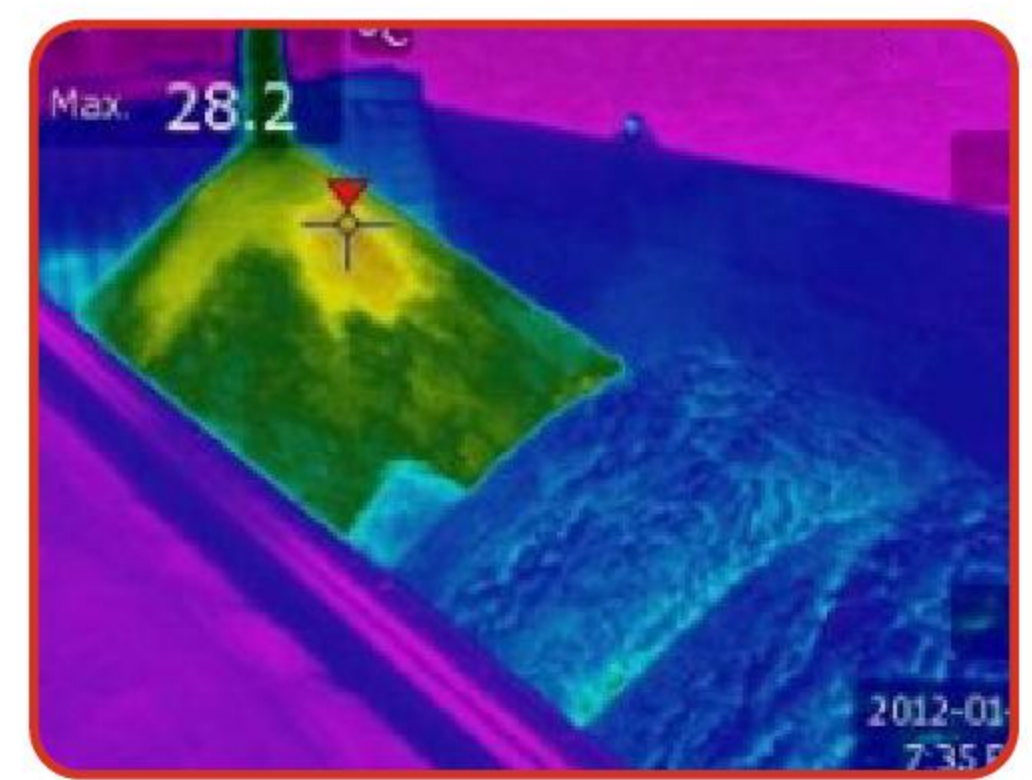
Higher education research



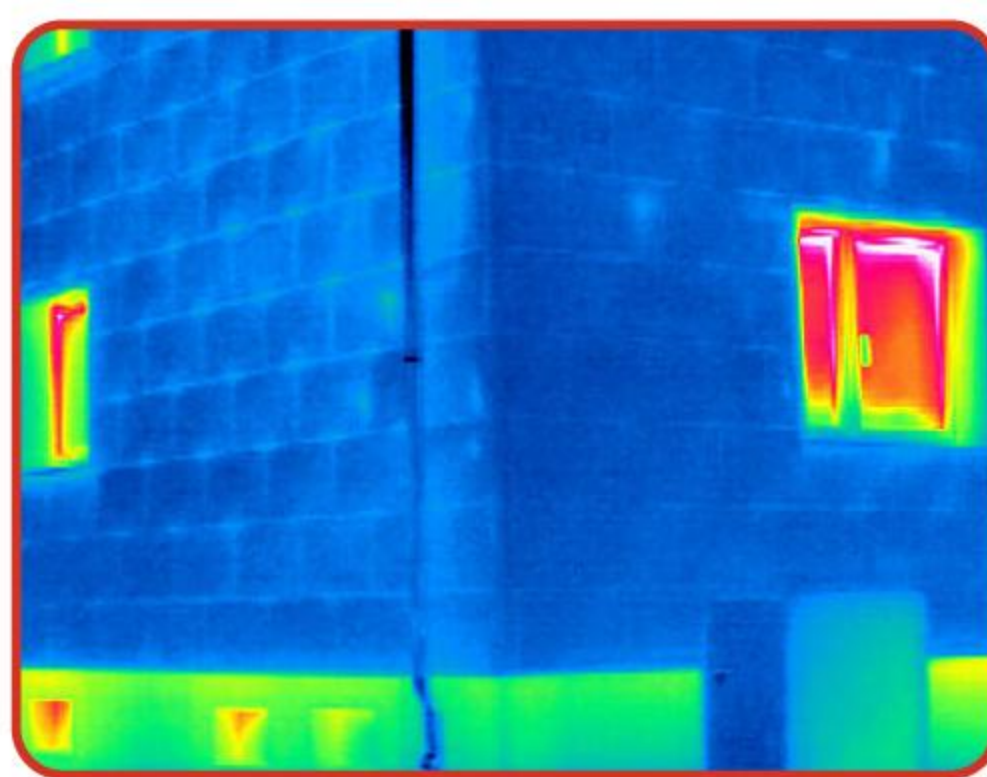
Electric power inspection



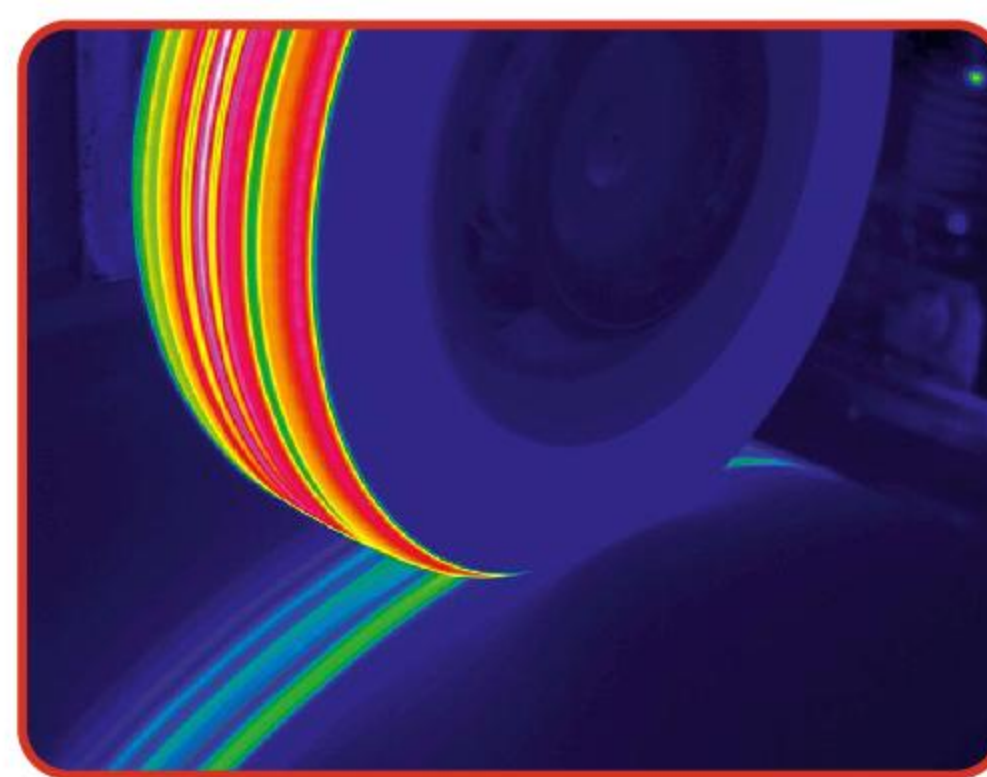
Etroleum and petrochemical



Coal metallurgy



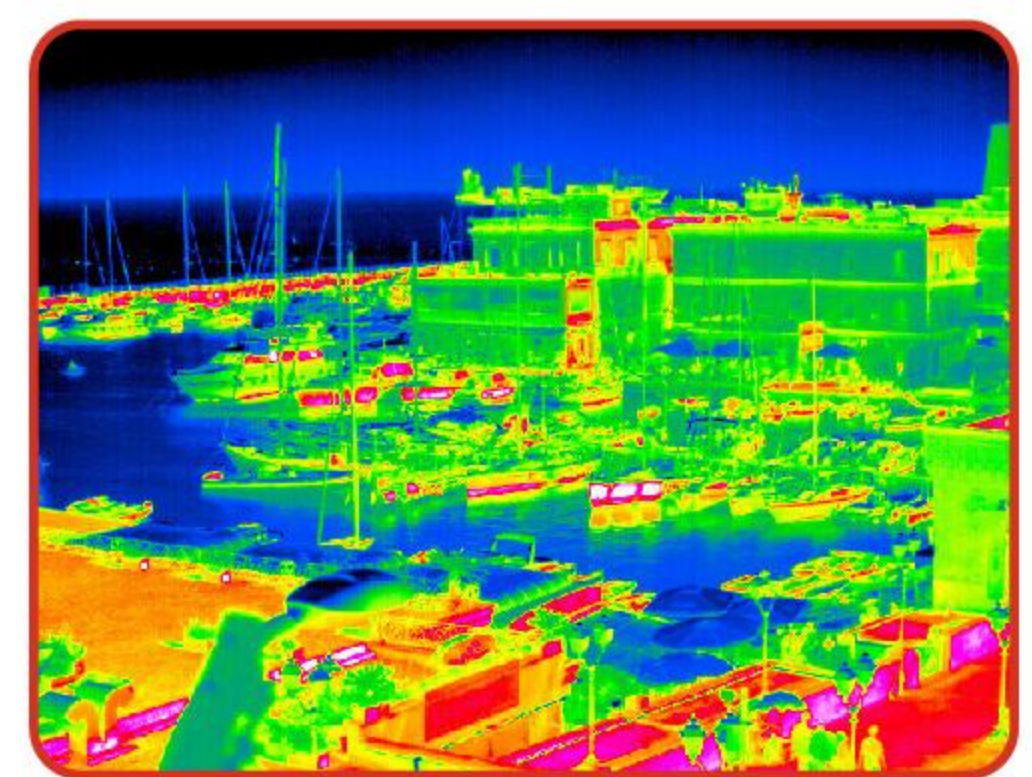
Building industry



Metro



Laser welding



Security inspection

It is suitable for higher education and scientific research, electric power transportation and inspection, petroleum and petrochemical, coal mining and metallurgy, construction industry, property inspection, insurance survey, rail transit, traditional, large machinery, high-tech, laser, die casting and other manufacturing industries.

TECHNICAL PARAMETER

Handheld Thermal Imager HD44A25		HD46A25
Thermal imaging		
Sensor type	Uncooled detector	
Detector resolution	480x360(172,800 Pixel)	640×512(327,680 Pixel)
Response band	7.5~14μm	
Netd (noise equivalent temperature difference)	<0.03°C(30mK)@25°C(77°F), F#=1.0	
maximum image size	640×480	
Infrared image resolution	640×480(307,200 pixel)	
Minimum imaging distance	0.3m	
Field of view	19°×14°	25°×19°
Lens extension	Magnifier (0.5X: 35.4°(H)x26.2°(V) 2X: 9.3°(H)x7°(V) 3X: 5.7°(H)x4.3°(V))	Magnifier (0.5X: 48.2°(H)x36°(V) 2X: 12.3°(H)x9.3°(V) 3X: 7.6°(H)x5.7°(V))
Digital zoom	support, 1.x~8.xContinuous	
Frame rate	50Hz	
Focus mode	Auto, Continuous Auto, Laser Assisted, Touch Focus, Manual	
F-number	F1.0	
Temperature measurement range	-20°C~150°C, 0°C~650°C, 300°C~2000°C	
Accuracy	±2°C or ±2%, Take the maximum value	
Spatial resolution(IFOV)	0.68mrad	
super resolution	support, 960x720(691,200pixel)	support, 1280×960(1,228,800pixel)
Focus speed	about2s	
Visible light		
Maximum image size	3264×2448	
Image resolution	1600x1200	
Video resolution	1600x1200	
Image display		
Monitor	4.3"LCD capacitive touch screen 800×480	
Image mode	Thermal imaging, Visible light, Fusion, Picture-in-picture, Blending	
Screen display mode	Support linear, histogram	
False color mode	White Hot, Black Hot, Rainbow, Iron Red, Red Hot, Fusion, Rain, Blue Red	
Minimum temperature difference	2°C	
Supported by manual agc mode		
Color high lights	High temperature focusing/low temperature focusing/range focusing/low temperature humidity detection	
System features		
Laser distance measurement	Indoordistance : 50m Outdoor distance: 15m	
Temperature measurement rules	Support hot spot, cold spot, center point, 10 points, 5 boxes, 5 circles, 1 line temperature measurement	
External optical correction	support	
UVC screen casting	support, UVC alarm client	
Bluetooth	support , Bluetooth4.2	
Positioning	All images support overlay GPS, BDS, GLONASS or GALILEO location data	
HDMI	support	
Laser pointer	support, classII, wavelength: 635nm; power<1mw	
Photograph	Thermal imaging, visible light, dual light fusion、blending	
Video	Thermal imaging, visible light, dual light fusion, blending, support framerate configuration (1~30frame)	
Illumination	support	
Electronic compass	support	
Text annotation	support , 255 english characters	
Interface language	English	
Wi-Fi	support , 802.11b/g/n(2.4GHz and 5GHz)	
4G	support , Micro SIM card	
Distance measurement accuracy	0.1m	
Storage	64GB, maximum 128GB	
Hardware interface	HDMI、USB type-C	
Battery type	Lithium-ion battery	
Battery operating time	4h, field replaceable, rechargeable	
System parameters		
Electromagnetic compatibility(EMC)	GB/T17799.2, GB17799.3-2012	
Operating temperature and humidity	-20°C~50°C, ≤95%	
Protection level	IP54	
Drop resistance	2m	
Weight	About 1075g (with lens, including batteries)	
Size	284.7mm×120.6mm×124.5mm	
Temperature measurement and analysis		
Native analysis	support	
Data storage		
Voice annotation	support (60s)	