

## PRODUCT INTRODUCTION --- HD46E15

Professional handheld temperature measurement products, equipped with 640\*512 pixels infrared detector, which can provide clearer infrared images and higher temperature measurement accuracy, 8 megapixel visible light camera module and other powerful configurations, supplemented with professional functions such as editing temperature rules of dots, lines, and frames, and setting emissivity flexibly in sub-areas, etc., and coupled with powerful and professional mobile phone APP and computer software, it can provide more professional temperature measurement services for every engineer.



HD46E15 productchart

## PRODUCT FEATURES



### Manual focus

Manual focusing is supported



### Large size touch screen

3.5-inch touch sunlight screen



### A variety of ways

Supports point, line, and frame temperature measurement



### Measuring range

Temperature measurement range: -20°C~650°C



### Portable charging

Standby time 4H, on-site replacement, rechargeable



### Off-line temperature measurement analysis

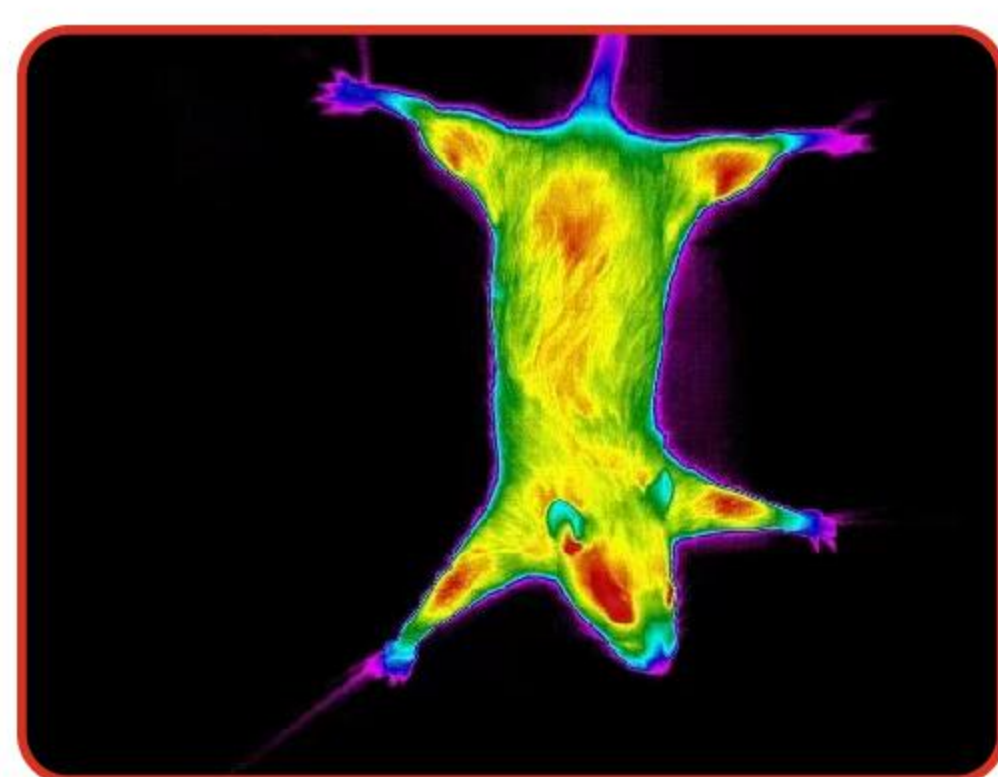
Picture storage full screen temperature measurement information, support offline temperature measurement analysis (with the client to use)



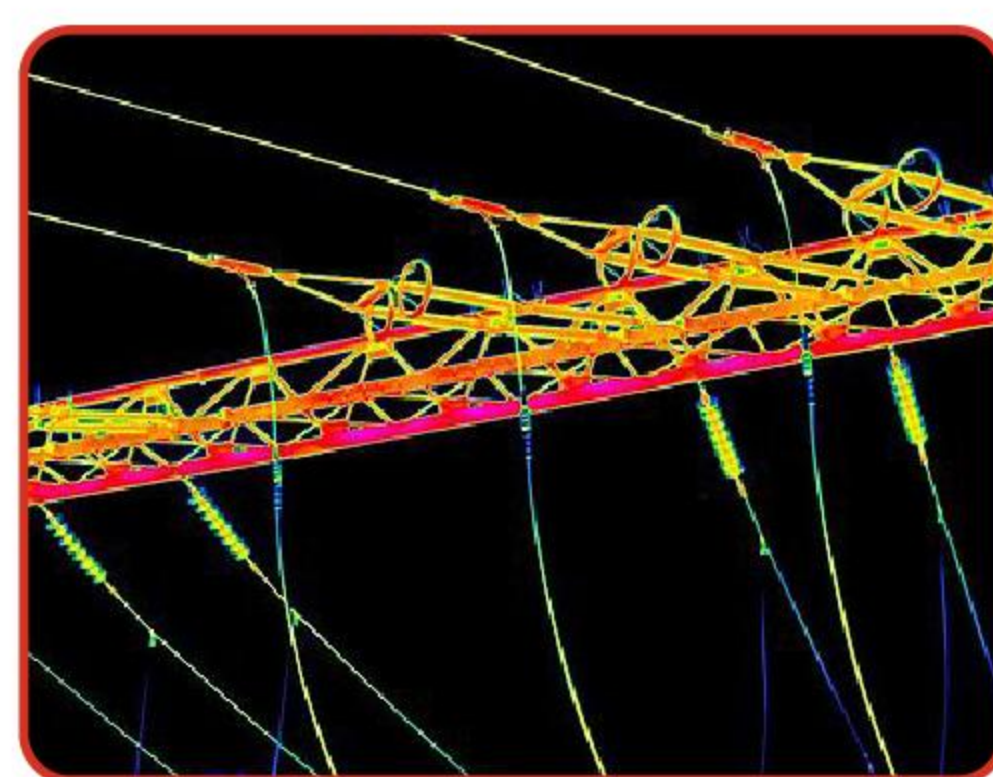
### Image transmission and other modes

Support ledger, ISR, remote photo album and mixed mode

## APPLICATION SCENARIOS



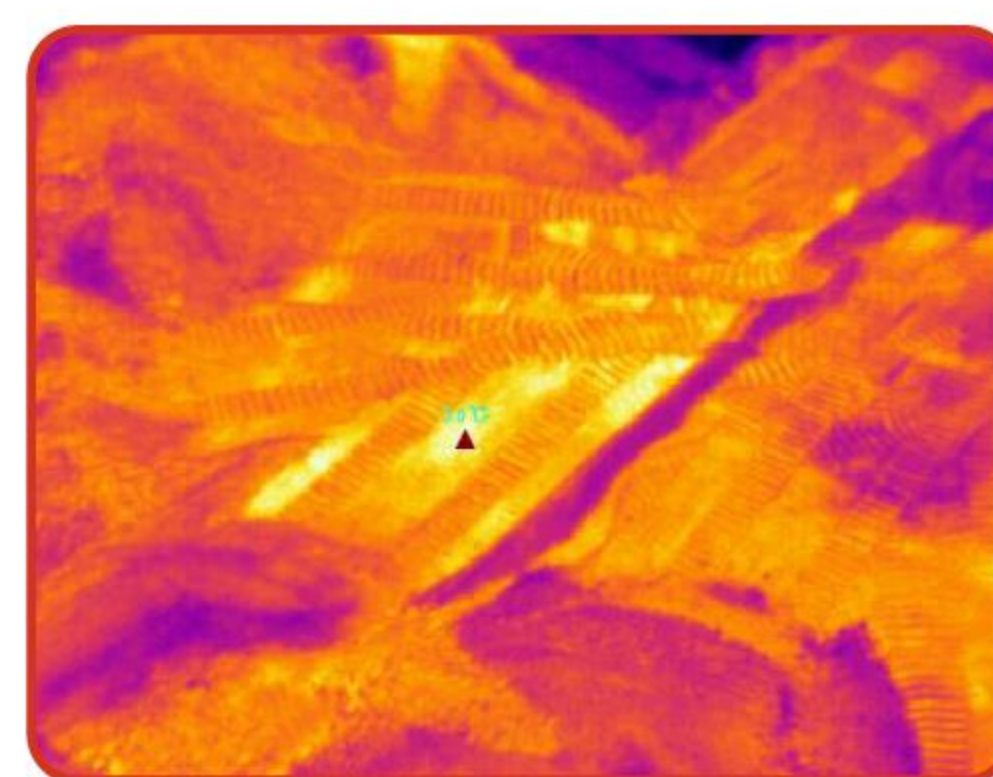
Higher education research



Electric power inspection



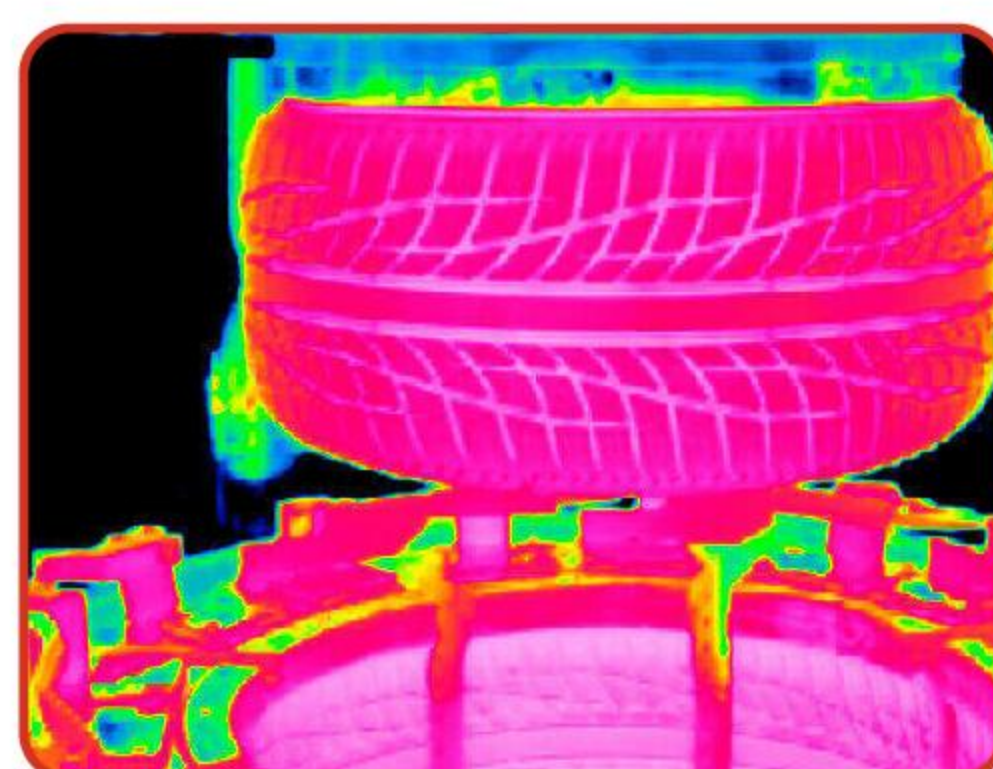
Petroleum and petrochemical



Coal metallurgy



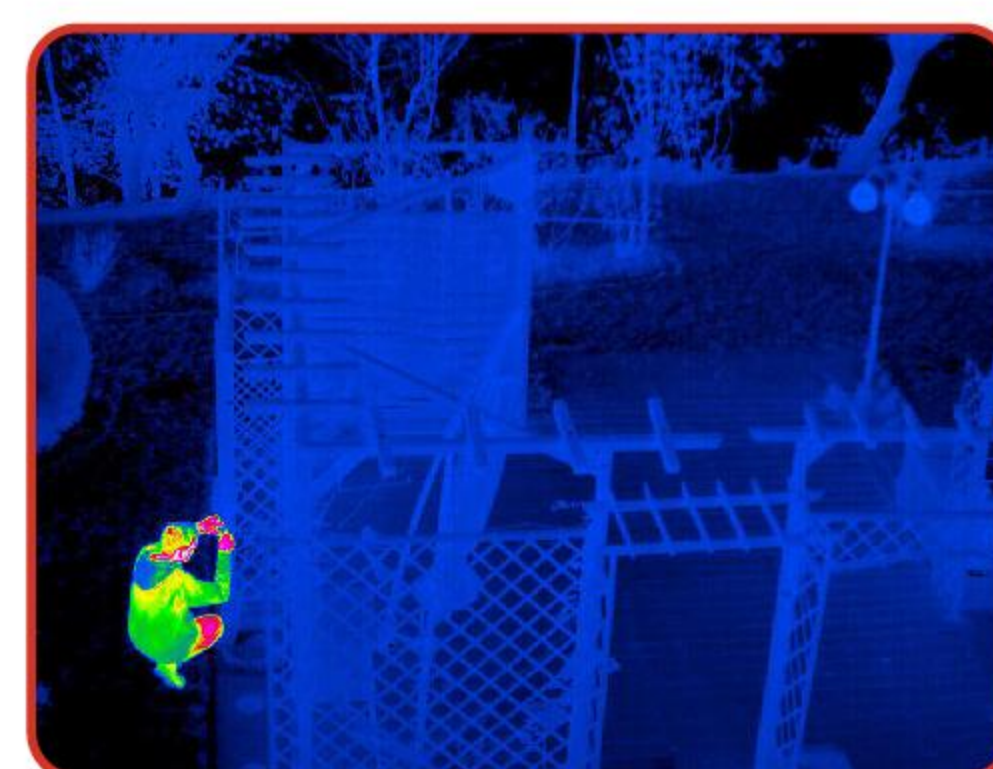
Building industry



Rail traffic



Laser bonding



Security inspection

It is suitable for high education and scientific research, electric power operation and inspection, petroleum and petrochemical, coal mine metallurgy, construction industry, property inspection, insurance survey, rail transport, traditional, large machinery, high-tech, laser, die-casting and other manufacturing industries.



# TECHNICAL PARAMETER

Hand - held Thermal Imager (HD46E15)	
Thermal Imaging	
Sensor Type	Uncooled Detector
Response Wavelength	7.5~14μm
NETD (Noise - Equivalent Temperature Difference)	<30mk (@25°C, F#=1.0)
Maximum Image Size	640×480
Thermal Imaging Lens Focal Length	15mm
Field of View (FOV)	41.9°×33.3°
Digital Zoom	1.0~8.0 continuous digital zoom
Frame Rate	25Hz
F-number	F1.0
Temperature measurement range	-20°C~650°C
precision	±2°C or ±2%, take the maximum value
Spatial Resolution (IFOV)	1.13mrad
Infrared detector resolution	640*512
Remotely transfer photos to albums	Supported
Blending	Supported
AI super-score	1280*960
Visible Light	
Maximum Image Size	3264×2448
Picture Resolution	1600x1200
Video Resolution	1600x1200
Image Display	
Display	3.5"LCDD capacitive touch screen640×480
Image Modes	Supports 8 false - color modes: white - hot, black - hot, rainbow, iron - red, red - hot, fusion, rain, blue - hot, and also supports two - stage false - color functions such as high -temperature focusing
Display Modes	Visible light, thermal imaging, dual - light fusion, picture - in - picture, mixing
System Functions	
Alarm Linkage	Sound - light linkage alarm
Bluetooth	Supported
Laser Pointer	Supported
Photography	Thermal imaging, visible light, dual - light fusion, picture - in - picture, mixing
Video Recording	Thermal imaging, visible light, dual - light fusion, picture - in - picture, mixing
Illumination	Supported
Text Annotation	Supported
Interface Language	中文
Ledger	Supported
Wi-Fi	Supported
Storage	64G
Hardware Interface	TYPE-C
Battery Type	Lithium - ion battery
Battery Working Time	4h, can be replaced on - site, rechargeable
System Parameters	
Operating Temperature and Humidity	-20°C~50°C, ≤95%
Protection Level	IP54
Drop - proof Level	2m
Weight	686g
Dimensions	244mm×100mm×104mm
Electromagnetic Compatibility (EMC)	GB/T17799.2, GB17799.3-2012
Data Storage	
Voice Annotation	Supported (60s)